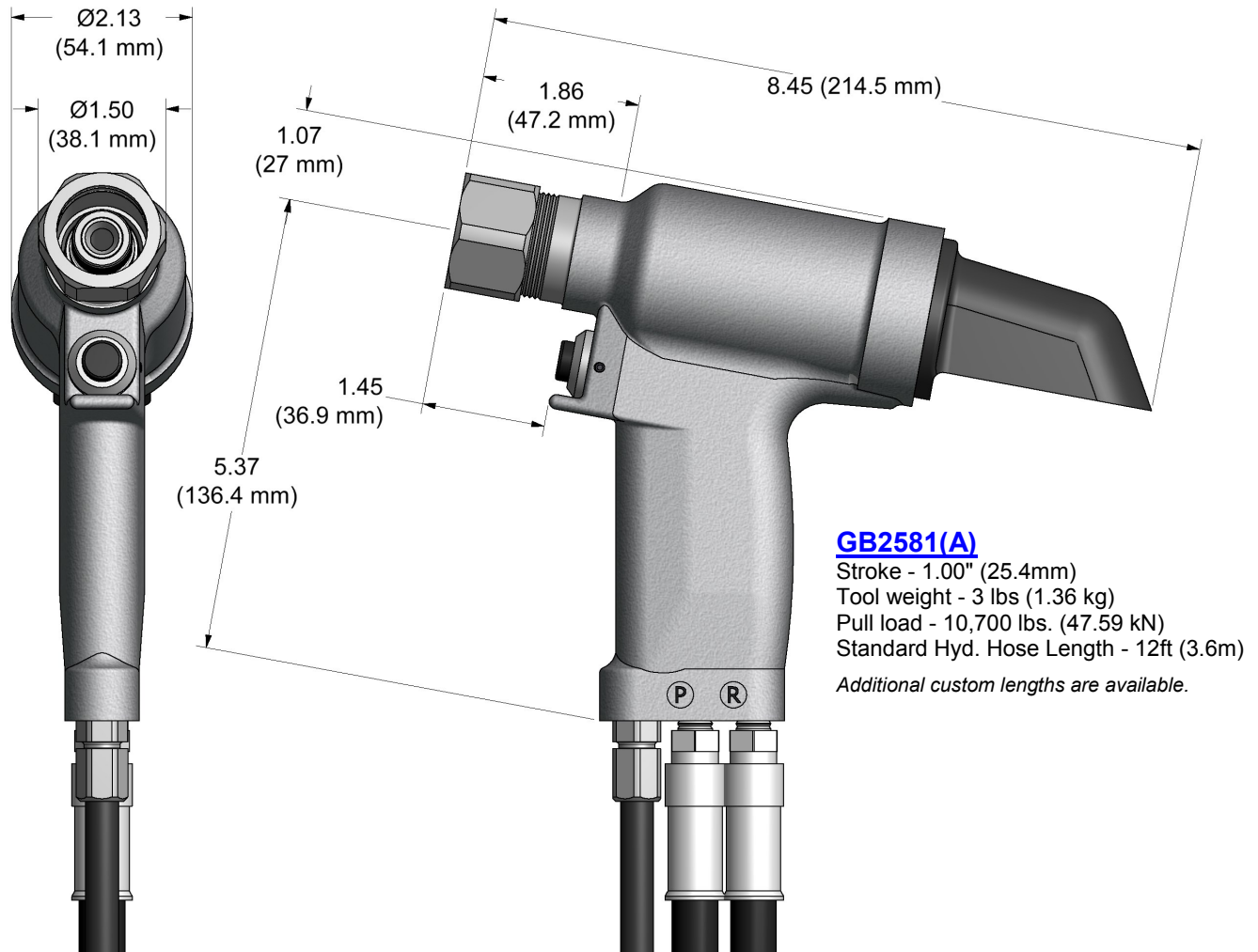


GB2581 GB2581A

HYDRAULIC INSTALLATION TOOL



DESCRIPTION

The GB2581 & GB2581A is a hydraulic installation tool designed specifically for the efficient installation of a wide range of blind, lockbolt and Magna-Grip® fasteners thru 3/8" diameter. It weighs 6.6 lbs. (2.99 kg) and can be operated in any position with one hand. It has a 1.000" (25.4 mm) rivet setting stroke and a rated pull load of 10,700 lbs. (47.59 kN) @ 7,400 psi. (510.2 bar).

The GB2581 installation tool operates on hydraulic pressure developed by the GB940 power unit set at 7,400 psi. (510.2 bar) maximum PULL pressure and 3,200 psi (220.6 bar) maximum RETURN pressure. The tool comes equipped with 12 ft. hoses and electric cord kit complete with quick disconnects.

The GB2581(A) installation tool operates on hydraulic pressure developed by the GB910 Power unit set at 7,400 psi (510.2 bar) maximum PULL pressure and 3,200 psi (220.6 bar) maximum RETURN pressure. The tool comes equipped with 12 feet of hydraulic hoses, couplings, air actuator and tubing.

NOSE ASSEMBLIES ARE NOT FURNISHED WITH THE RIVETER AND MUST BE ORDERED SEPARATELY.



GB2581/GB2581A NOSE ASSEMBLY SELECTION CHART



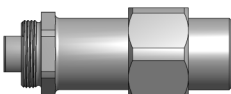
ACCESSORIES (SOLD SEPARATELY)

Catcher Bag-Stem #756610
(Sold Separately)



Adapter Assy #353204

Adapts all offset 204 series noses & required with 258152 Stroke Limiter and 258157 Relief valve.
(Sold Separately)



Stroke Limiter #258152

Required with 258157 Relief Valve used with 353204 adapter for 204 series noses.
See Chart pg. 15
(Sold Separately)



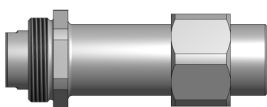
Relief Valve #258157

Required with 258152 stroke limiter when used with 353204 adapter for 204 series noses.
See Chart pg. 15
(Sold Separately)



Adapter Assy #353205

Adapts all offset 205 series noses & required with 258153 Stroke Limiter and 258156 Relief valve.
(Sold Separately)



Stroke Limiter #258153

Required with 258156 Relief Valve used with 353205 adapter for 205 series noses.
See Chart pg. 15
(Sold Separately)



Relief Valve #258156

Required with 258153 stroke limiter when used with 353205 adapter for 205 series noses.
See Chart pg. 15
(Sold Separately)



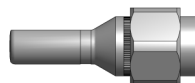
Gage Bilt offers a wide selection of standard and custom kits tailored to your needs. Contact us for more information.



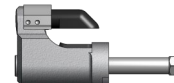
MAGNA-GRIP® IS A REGISTERED TRADEMARK OF ALCOA INC.

NOSE ASSEMBLIES (SOLD SEPARATELY)

STRAIGHT



OFFSET



FASTENER	DIA.	STRAIGHT		*OFFSET	
ASP® 2 ASP & ASP PF ASP FF & ASP F ASP-LC	13/64 17/64 21/64	ASP06-745C-23 ASP08-745B-23 ASP10-755-23	ASP06-745C-48 ASP08-745B-48 ASP10-755-48	ASP06-204D-27OS ASP08-204D-27OS ASP10-204D-27OS	ASP06-204D-37OS ASP08-204D-37OS ASP10-204D-37OS
BOM® BLIND OVERSIZE MANDREL	1/4 5/16 3/8	BOM08-755A-23 BOM10-756-26 **BOM12-756A-26			
COMMERCIAL LOCKBOLTS CBL® AVDELOK®	3/16 1/4 5/16 3/8	NAS06-2581-12 NAS06-2581-23 NAS08-2581-12 NAS08-2581-12 LB10-745C-26 LB12-756-26	NAS06-2581-48 NAS08-2581-48 NAS10-2581-23 NAS12-756-48	NAS06-204C-25OS NAS06-204C-34OS NAS08-204C-25OS NAS08-205A-31 NAS10-205D-31 NAS12-205A-31	NAS06-204D-30OS NAS08-204D-30OS NAS08-204C-34OS NAS08-204C-34OS
CONTAINER BOLT	3/8	HT12-756-23			
FLOOR BOLT	5/16	FT10-353A-28			
LGP® LIGHTWEIGHT GROOVE PROPORTION LOCKBOLTS	5/32 3/16 7/32 1/4 5/16 3/8	LGP05-2581-12 LGP05-2581-48 LGP06-2581-12 LGP06-2581-48 LGP07-2581-12 LGP07-755-48 LGP08-2581-12 LGP08-2581-48 LGP10-2581-12 LGP10-2581-48 LGP12-745B-12 LGP12-756-48	LGP05-2581-23 LGP06-2581-23 LGP07-755-23 LGP08-2581-23 LGP10-2581-23 LGP12-756-26	LGP05-204C-25OS LGP05-204C-34OS LGP06-204C-25OS LGP06-204C-34OS LGP07-204C-25OS LGP07-204C-34OS LGP08-204C-25OS LGP08-204C-34OS LGP10-205D-31 LGP12-205A-31	LGP05-204C-30OS LGP06-204D-30OS LGP07-204C-30OS LGP08-204D-30OS LGP08-205A-31
LOCKBOLT NAS SHEAR PULL TYPE NAS TENSION PULL TYPE & GROOVE PROPORTION NASS = NAS SHEAR NAST = NAS TENSION	5/32 3/16 1/4 5/16 3/8	NASS05-2581-12 NASS05-2581-23 NASS05-2581-48 NAS06-2581-12 NAS06-2581-48 NAS08-2581-12 NAS08-2581-48 NAS10-2581-12 NAS10-2581-48 NAS12-745B-12 NAS12-756-48	NAST05-2581-12 NAST05-2581-23 NAST05-2581-48 NAS06-2581-23 NAS08-2581-23 NAS10-2581-23 NAS12-756-26	NASS05-204C-25OS NASS05-204C-30OS NASS05-204C-34OS NAS06-204C-25OS NAS06-204C-34OS NAS08-204C-25 NAS08-204C-34 NAS10-205D-31 NAS12-205A-31	NAST05-204C-20OS NAST05-204C-30OS NAST05-204C-34OS NAS06-204D-30OS NAS08-204D-30OS NAS08-205A-31
MULTI-GRIP LOCKBOLT	3/16 1/4 5/16 3/8	MG06-745-48 MG08-745-48 MG10-756-28 MG12-756-28			
MULTI-GRIP STRUCTURAL BLIND RIVET	3/8	MGL12-353C-28			
OVERSIZE STRUCTURAL RIVET	1/4 5/16 3/8	OS08-745-48 OS10-756-26 OS12-756A-26	OS10-756-48 OS12-756A-48		
BLIND BOLT (SINGLE ACTION) WITH OR W/O DRIVE WASHER	5/32 3/16 1/4	SB05-745C-23 SB06-745B-23 SB08-755-23	SB05-745C-48 SB06-745B-48 SB08-755-48	SB05-204D-27OS SB06-204D-27OS SB08-204D-27OS	SB05-204D-37OS SB06-204D-37OS SB08-204D-37OS
M S90353S & U & M S90354S & U M S2140S & U & M S2141S & U M AXI-BOLT®, BACB30YY, YU, & YT	5/16 3/8	SB10-756-28 SB12-756-28	SB10-756-48 SB12-756-48	SB08-205A-35 SB10-205A-35 SB12-205A-35	
BLIND BOLT (SINGLE ACTION) WITH DRIVE WASHER	5/32 3/16 1/4	UBB05-745C-23 UBB06-745B-23 UBB08-755-23	UBB05-745C-48 UBB06-745B-48 UBB08-755-48	UBB05-204D-27OS UBB06-204D-27OS UBB08-204D-27OS	UBB05-204D-37OS UBB06-204D-37OS UBB08-204D-37OS
MS90353S & U & MS90354S & U MS21140S & U & MS21141S & U CR7000 SERIES BACB30YY, YU, & YT	5/16 3/8	UBB10-756-28 UBB12-756-28	UBB10-756-48 UBB12-756-48	UBB08-205A-35 UBB10-205A-35 UBB12-205A-35	

ASP®, BOM®, CBL®, M LGP®, MG®, AND LGP® ARE REGISTERED TRADEMARKS OF ARCONIC INC. AVDELOK® IS A REGISTERED TRADEMARK OF AVDEL UK LIMITED. MAXI-BOLT® IS A REGISTERED TRADEMARK OF CHERRY AEROSPACE FASTENERS.

GAGE BILT CERTIFIES THE GB2581 WILL INSTALL THE ABOVE FASTENERS

*ALL OFFSET 204 SERIES NOSES REQUIRE 353204 ADAPTER WITH 258152 STROKE LIMITER AND 258157 RELIEF VALVE.

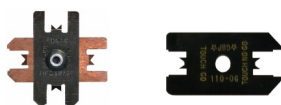
*ALL OFFSET 205 SERIES NOSES REQUIRE 353205 ADAPTER WITH 258153 STROKE LIMITER AND 258156 RELIEF VALVE.

** Repair Only

NOTE: THE LAST 2 DIGITS OF THE NOSE ASSEMBLY REPRESENTS THE LENGTH THE NOSE EXTENDS FROM THE TOOL. I.E. -20 = 2.0 INCHES

10/17

GAGE BILT ALSO SUPPLIES PIN & COLLAR SWAGE INSPECTION GAGES TO CERTIFY CORRECT SWAGE INSTALLATION.
(Sold Separately)



Grip Gage #GB105093 (Equivalent to #105093)
For NAS LOCKBOLTS and blind fasteners
(Sold Separately)